

MANUFACTURED BY MCKEE TECHNOLOGIES

# EXPLORER

COMFORT STATION 3



Explore the finest  
in sanitation...

20 ft. Contractor Grade  
for Job Sites & Special Events



Our Storage Holding tanks  
are Hot Dip Galvanized for  
the longest service life.

## PARTICULARS

**Layout:** Private Washrooms, Utility Room  
**Frame:** Steel Frame, 10" x 15.3" Channel  
**Suspension:** Rubber Torsion 5200 lbs  
**Fresh Water:** 280 Gallon Capacity  
**Sewage:** 450 Gallon Capacity  
**Faucets:** Self-Closing, Water Saving  
**Dispensers:** Paper Towel, Soap, Toilet Paper

**Water Pump:** 120V On Demand  
**Water Heater:** 8.5 Gal. Capacity - 500W  
**Dimensions:** 6' Wide, 20' Long, 9 1/2' Tall  
**Trailer:** DOT Compliant  
**Porcelain:** 3x Low Flush Toilets, 2x Urinal

## STANDARD FEATURES



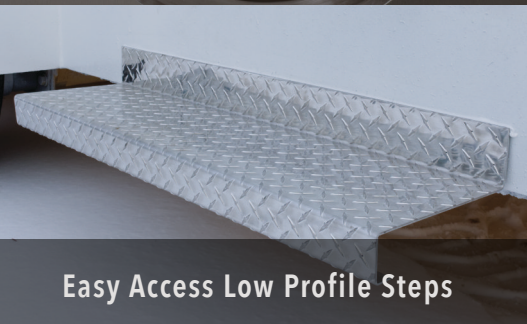
Stainless Steel Sinks



Radial Tires



Manual Flush Urinals



Easy Access Low Profile Steps



Washroom Entry Lights



Low Flush Toilets

MANUFACTURED BY MCKEE TECHNOLOGIES

# EXPLORER

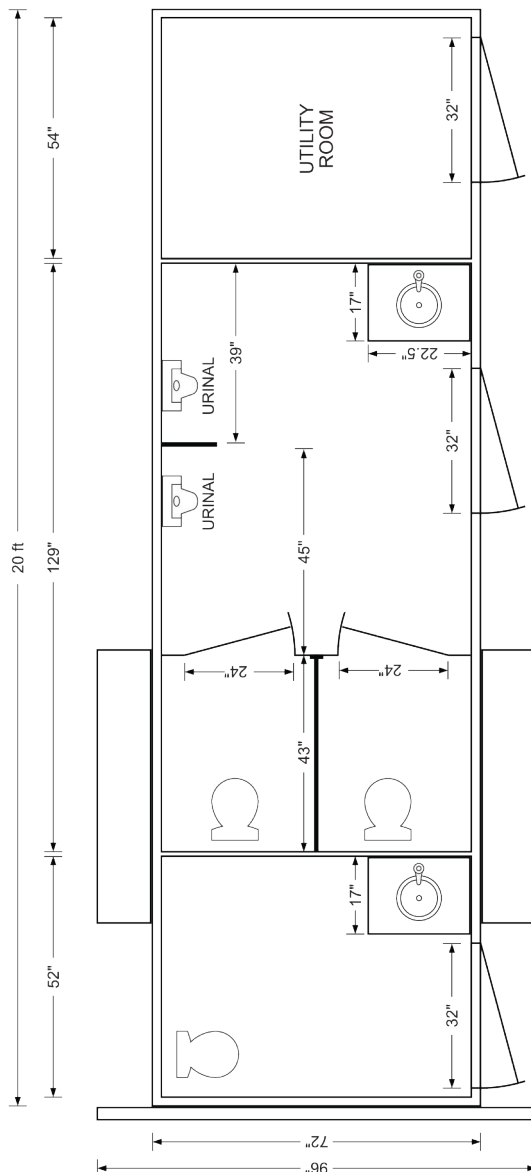
COMFORT STATION 3

- Continuous Welded Leak-proof Construction
- Heavy Gauge All Steel Exterior
- Insulated for Winter Use
- Galvanized Steel Sewage Holding Tank
- Poly Propylene Water Supply Tank
- Quality Insulated Steel Exterior Doors
- Steel Wall Frames for Durability
- Heavy Duty Suspension
- ST225 / 75R15 Radial Tires
- Four Corner Stabilizer Jacks
- 15 AMP 110V/115V Lights, Water Pump, Water Heater
- 20 AMP 220V/240V Heaters
- Private Washrooms

TF2M1F620

2 Male  
1 Female  
Floor Plan  
Shown Here

Additional  
Configurations  
Available



## FEATURES

